

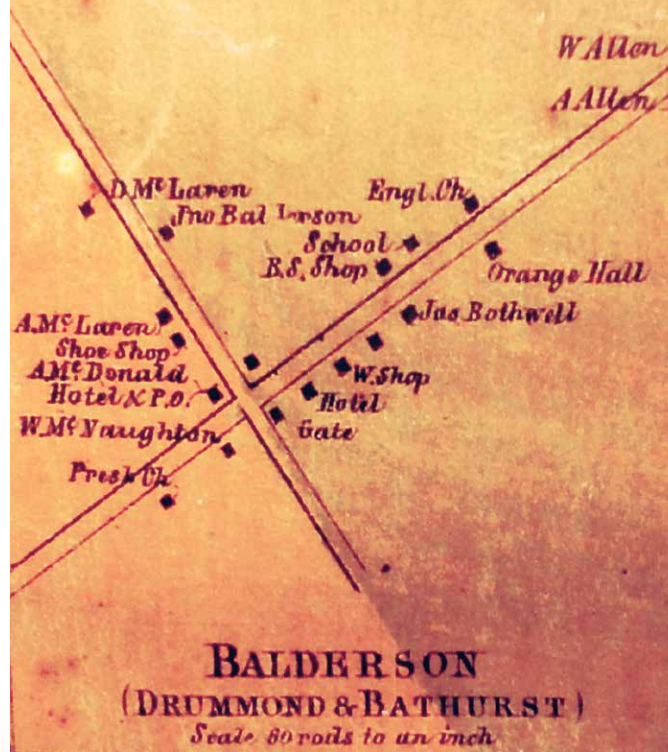
Message from Our Reeve

It is my pleasure to invite you to join in the celebrations marking the 200th anniversary of the founding and settlement of what is now Drummond/North Elmsley Township.

Since 1816, our Township has grown into a vibrant rural community. We have always valued our heritage and the contributions of the original settlers, as well as the Algonquins who have long been here and those who have come since and contributed to who we are today. These 200th celebrations have given us a great opportunity to learn about and pay tribute to our unique cultures and experiences from all parts of Drummond and North Elmsley.

Together, we can make 2016 a year to remember!

Aubrey Churchill, Reeve



ROSECAMP
FARMS INC.



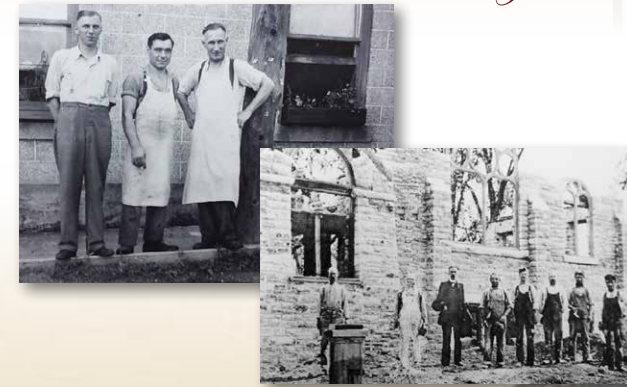
LANARK
COUNTY

Canada



200th Anniversary
PERTH MILITARY
SETTLEMENT

The History of Balderson Village



Celebrating
200 years
1816-2016
Drummond/North Elmsley

www.dnetownship.ca

www.dnetownship.ca

www.dnetownship.ca



Originally called "Balderson Corners" this village was named after Sergeant John Balderson, who served with the 76th regiment under the Duke of Wellington. Born in Lincoln, England, in 1783, Sergeant Balderson set sail for the New World when the regiment was disbanded, and was the first settler on this one-hundred acre property in 1816.

The first Anglican and Presbyterian churches were built in the early 1830s which were replaced in 1885 and 1905 by the splendid stone churches that remain in the village today. The first school was a log building which served until 1865 when the school district bought the Orange Hall across the road. That building served as the village school until 1968. The Post Office opened in 1858 in Agnus McDonald's Hotel, one of two hotels in the village. Upkeep of the roads around the village were funded by two tollgates; on the route north to Lanark and west of the village toward Fallbrook.

In 1881, the Balderson Cheese and Butter Company was formed and a factory was built. Balderson was one of twelve factories that contributed curds used to produce the 22,000 lb. Mammoth Cheese, which was sent to the 1893 World's Fair in Chicago.

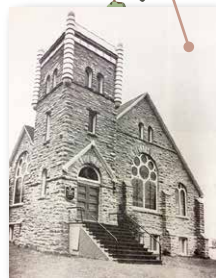
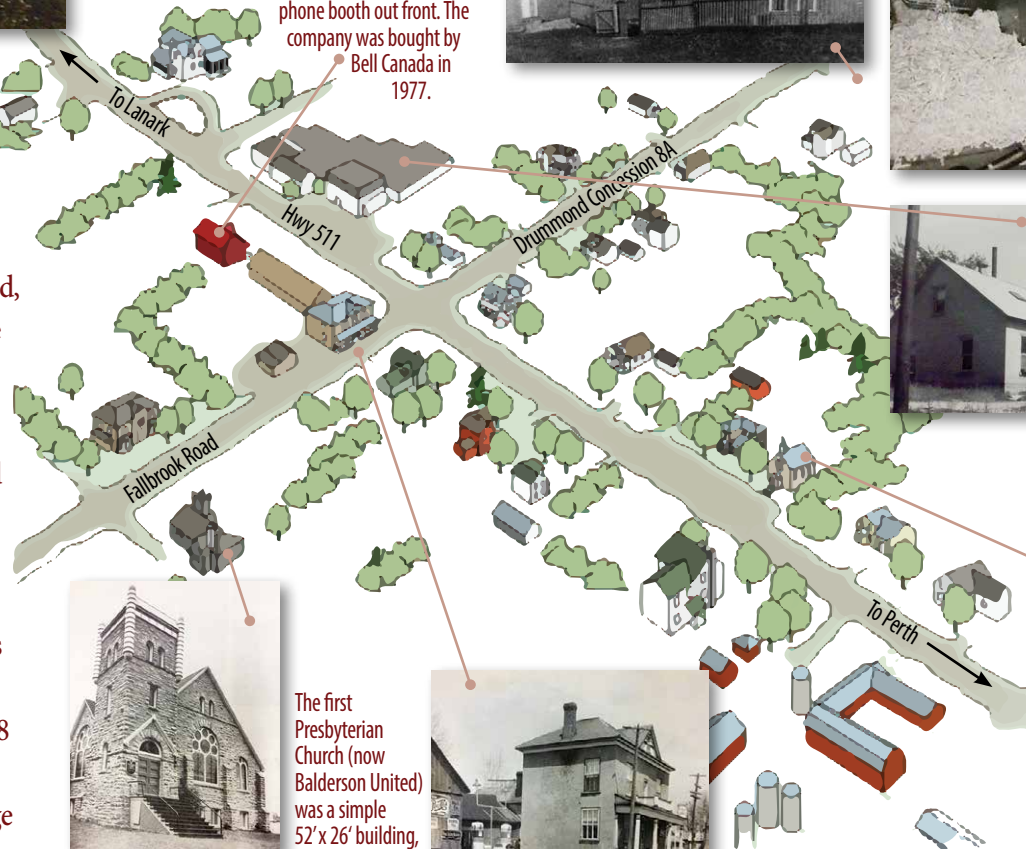


The Balderson Telephone Company was formed in 1910 and by 1915 had 114 subscribers. Originally 200 poles were bought and distributed by two men and a team of horses for 30 cents an hour. Note the phone booth out front. The company was bought by Bell Canada in 1977.

The Orange Hall which was built in 1859 was purchased by S.S.#11 in 1868 to replace the earlier log structure used for a school. The two-room school was used for 100 years until its closure in 1968 and later converted to a home.



The Balderson Cheese Co. was formed in 1881 as a co-operative starting with fifty-one milk shippers. In 1892-93, it was one of twelve factories involved in the Mammoth Cheese. In 1929, the original factory was destroyed by fire but was immediately rebuilt. Over the years Balderson Cheese won many national awards for quality and placed second on three different occasions at the World's Cheese Competition in Wisconsin. Production ceased in 1987 and manufacturing ended in 1993.



The first Presbyterian Church (now Balderson United) was a simple 52' x 26" building, built in 1838. In

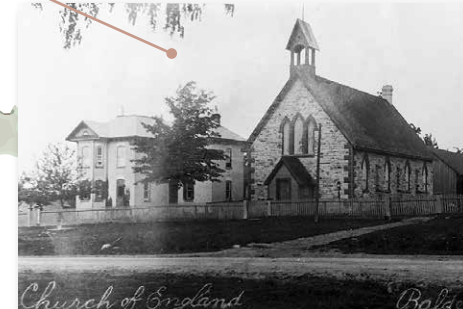
the early 1900's, stone was delivered by sleigh and wagon by local farmers and construction began on the beautiful stone church that stands today with the first service held in 1904. The manse was built in 1883.



Built in the early 1850's, this hotel and later general store was the location of the first post office in the village. The village had eleven post masters beginning with Mr. McDonald in 1858 and ending with Earl Myers in 1989, part of Myers General Store.



The annual school fair which brought several schools together was held at the McGregor farm in the early 1900's. The original Presbyterian (United) Church was moved to this site and continued to be used for services while the new stone church was being built.



The original English Church (now St. John's Anglican) was built in the early 1830's on the eighth concession of Drummond. Property was bought along the Perth/Lanark road in 1881 and the new church was built and opened for services in 1888. The manse was built in the early 1900's.